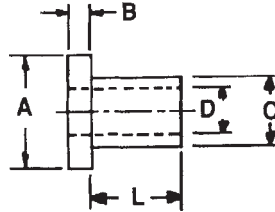
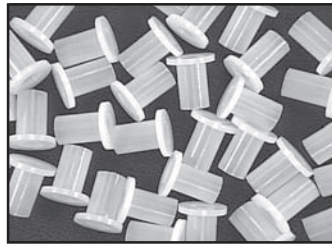
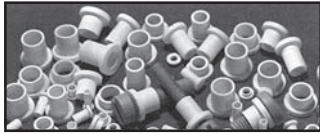


NYLON MACHINE SCREW INSULATORS



Nylon screw insulators are used to isolate metal screws electrically as well as to reduce corrosion. They can be used as light load bearings in many applications.

Material 6/6 Nylon - Natural Colour

PKG QTY. 100

SPAENAUR No.	Screw Size	Inch Dimensions (Millimetre equivalent in brackets)				
		L	A	B	C	D
230-014	2	1/8" (3.18)	.181" (4.60)	3/64" (1.19)	.120" (3.05)	.090" (2.29)
230-015	2	3/16" (4.76)	.181" (4.60)	3/64" (1.19)	.120" (3.05)	.090" (2.29)
230-016	2	1/4" (6.35)	.181" (4.60)	3/64" (1.19)	.120" (3.05)	.090" (2.29)
230-001	4	3/64" (1.19)	.235" (5.97)	3/64" (1.19)	.145" (3.68)	.115" (2.92)
230-002	4	1/16" (1.59)	.235" (5.97)	3/64" (1.19)	.145" (3.68)	.115" (2.92)
230-003	4	3/32" (2.38)	.235" (5.97)	3/64" (1.19)	.145" (3.68)	.115" (2.92)
230-004	4	1/8" (3.18)	.235" (5.97)	3/64" (1.19)	.145" (3.68)	.115" (2.92)
230-017	4	3/16" (4.76)	.235" (5.97)	3/64" (1.19)	.145" (3.68)	.115" (2.92)
230-018	4	1/4" (6.35)	.235" (5.97)	3/64" (1.19)	.145" (3.68)	.115" (2.92)
230-005	6	1/8" (3.18)	.290" (7.37)	3/64" (1.19)	.170" (4.32)	.140" (3.56)
230-019	6	3/16" (4.76)	.290" (7.37)	3/64" (1.19)	.170" (4.32)	.140" (3.56)
230-006	6	1/4" (6.35)	.290" (7.37)	3/64" (1.19)	.170" (4.32)	.140" (3.56)
230-020	6	3/8" (9.53)	.290" (7.37)	3/64" (1.19)	.170" (4.32)	.140" (3.56)
230-007	8	1/8" (3.18)	.344" (8.74)	1/16" (1.59)	.205" (5.21)	.173" (4.39)
230-021	8	1/4" (6.35)	.344" (8.74)	1/16" (1.59)	.205" (5.21)	.173" (4.39)
230-022	8	3/8" (9.53)	.344" (8.74)	1/16" (1.59)	.205" (5.21)	.173" (4.39)
230-023	8	1/2" (12.70)	.344" (8.74)	1/16" (1.59)	.205" (5.21)	.173" (4.39)
230-024	10	3/16" (4.76)	.399" (10.13)	1/16" (1.59)	.260" (6.60)	.200" (5.08)
230-008	10	1/4" (6.35)	.399" (10.13)	1/16" (1.59)	.260" (6.60)	.200" (5.08)
230-009	10	3/8" (9.53)	.399" (10.13)	1/16" (1.59)	.260" (6.60)	.200" (5.08)
230-025	10	1/2" (12.70)	.399" (10.13)	1/16" (1.59)	.260" (6.60)	.200" (5.08)
230-026	1/4"	1/8" (3.18)	.513" (13.03)	1/16" (1.59)	.312" (7.92)	.260" (6.60)
230-010	1/4"	3/16" (4.76)	.513" (13.03)	1/16" (1.59)	.312" (7.92)	.260" (6.60)
230-027	1/4"	1/4" (6.35)	.513" (13.03)	1/16" (1.59)	.312" (7.92)	.260" (6.60)
230-011	1/4"	3/8" (9.53)	.513" (13.03)	1/16" (1.59)	.312" (7.92)	.260" (6.60)
230-012	1/4"	1/2" (12.70)	.513" (13.03)	1/16" (1.59)	.312" (7.92)	.260" (6.60)
230-028	1/4"	5/8" (15.88)	.513" (13.03)	1/16" (1.59)	.312" (7.92)	.260" (6.60)
230-029	1/4"	3/4" (19.05)	.513" (13.03)	1/16" (1.59)	.312" (7.92)	.260" (6.60)
230-030	5/16"	1/4" (6.35)	.620" (15.75)	1/16" (1.59)	.360" (9.14)	.320" (8.13)
230-013	5/16"	3/8" (9.53)	.620" (15.75)	1/16" (1.59)	.360" (9.14)	.320" (8.13)
230-031	5/16"	1/2" (12.70)	.620" (15.75)	1/16" (1.59)	.360" (9.14)	.320" (8.13)

D